



WIM - Systems

# **USER MANUAL**

# **INTRODUCTION TO INFO DECK V1.0 SOFTWARE**

## Software Description

Info Deck is a software that was developed for WIM-Systems. Due to industrial development, manufacturers need more advanced systems for machine management, in order to have a more efficient production and to lower administration costs.

Info Deck software provides the solution through a high efficiency in quality and manufacturing control.

## Purpose and Features

1. Machines inspection for working status.
2. Real-time detection recording.
3. Historical data search and output.
4. Data statistics and analysis.
5. Generates different types of statistical tables.
6. Based in mysql data base technology.
7. Security control.
8. Fda & Gmp compatible

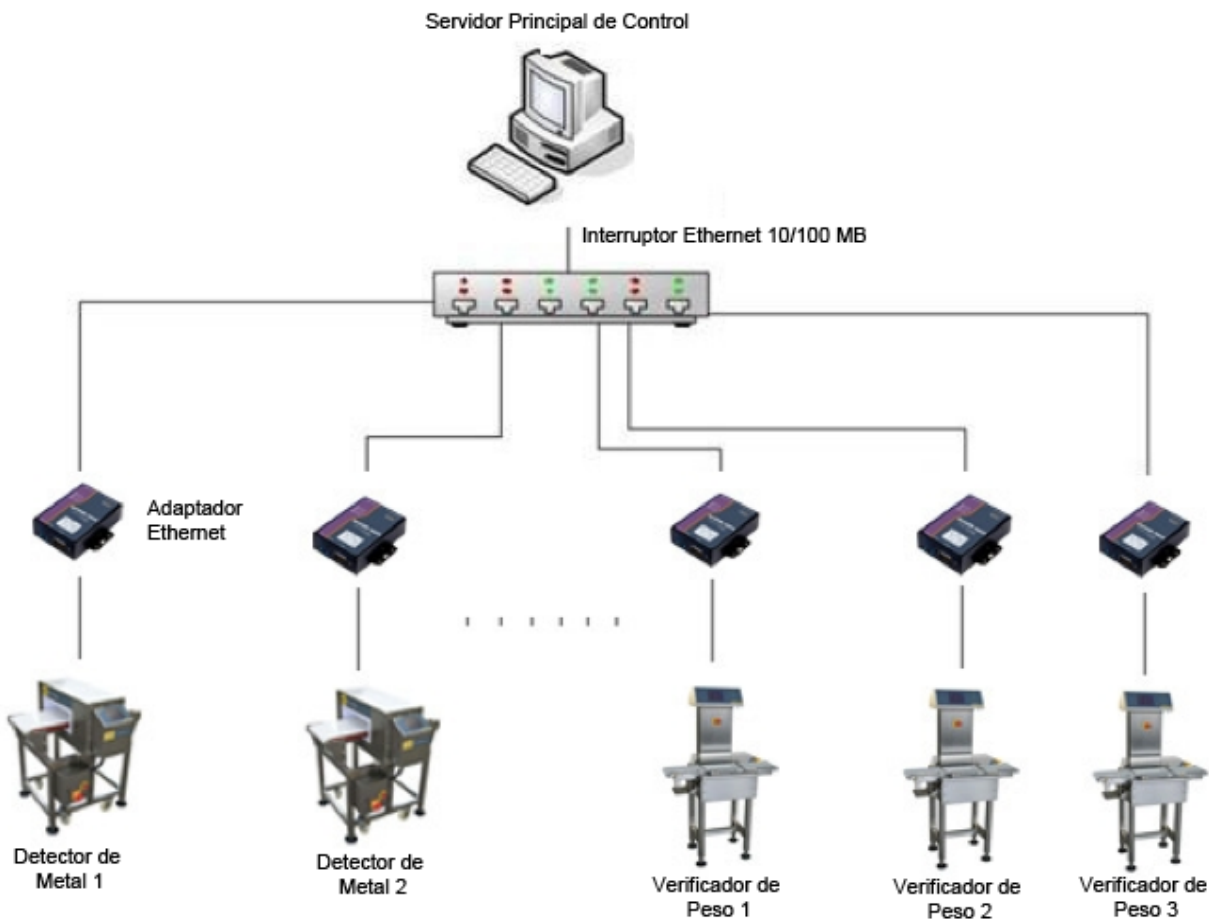
## Hardware Requirements

- X86 compatible PC.
- CPU: 1 GHZ (at least).
- RAM: 256 MB (at least).
- HDD: 40 GB (at least).
- Monitor: 17' 1280\*1024 (at least).
- 10/100 MB network port.
- Ethernet switch 10/100 MB.
- Ethernet adaptor (special device).

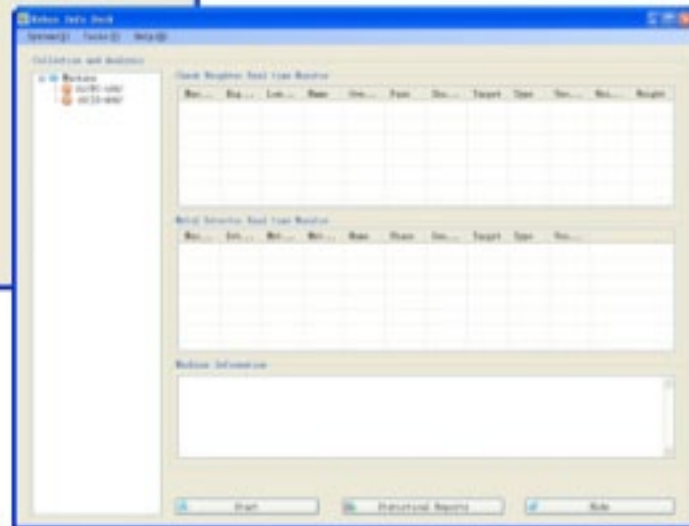
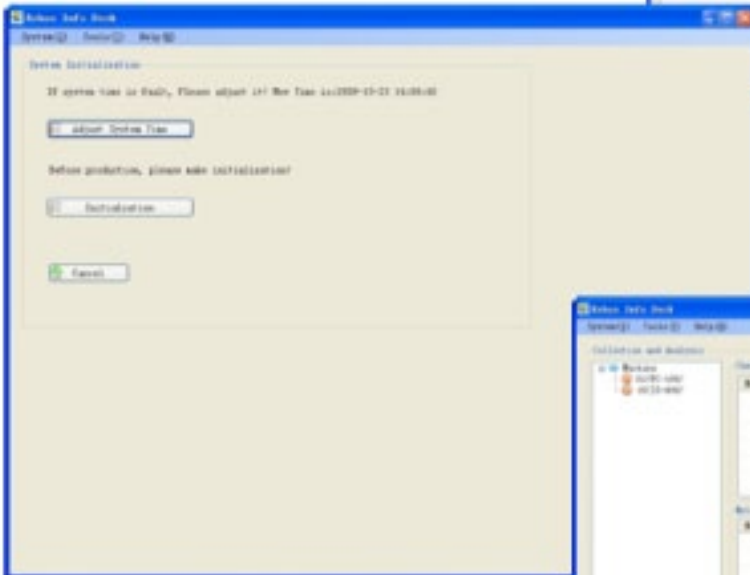
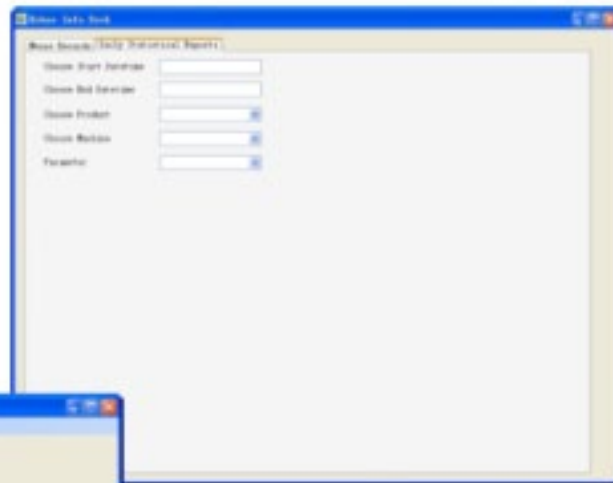
## Operating System

- Windows XP with service pack 3 (recommended).
- Windows Vista with service pack 2.
- Windows 2000 with service pack 4.
- Windows 2003 with service pack 3 (recommended).
- Windows 2008 with service pack 2.

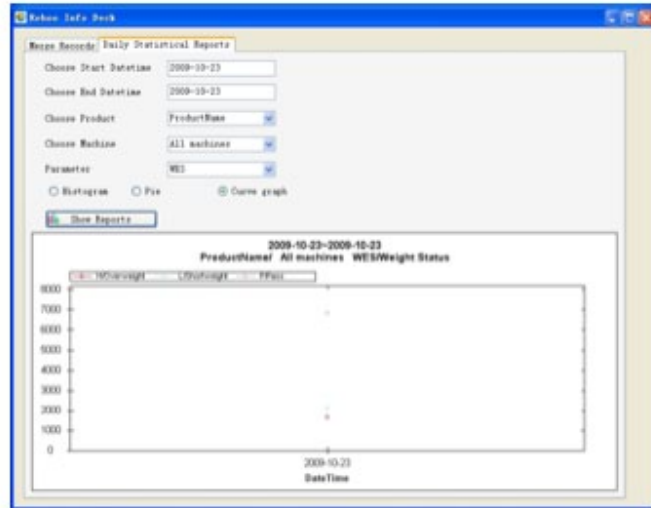
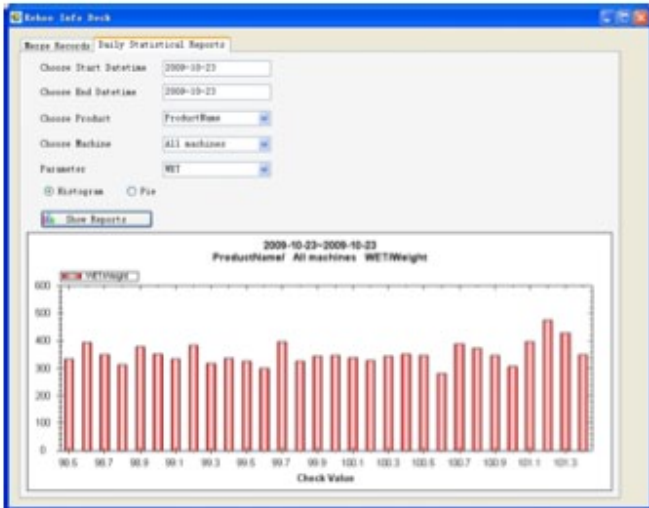
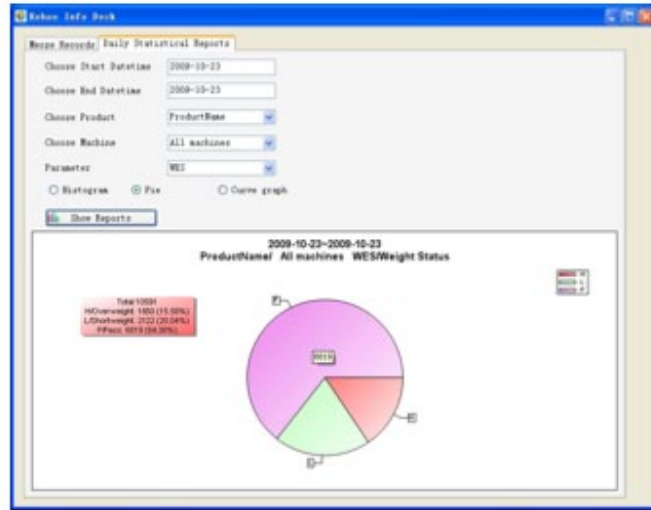
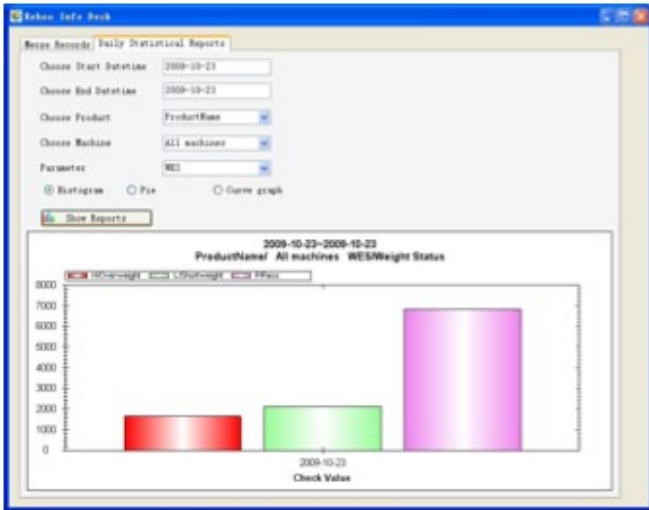
## Connecting Diagram



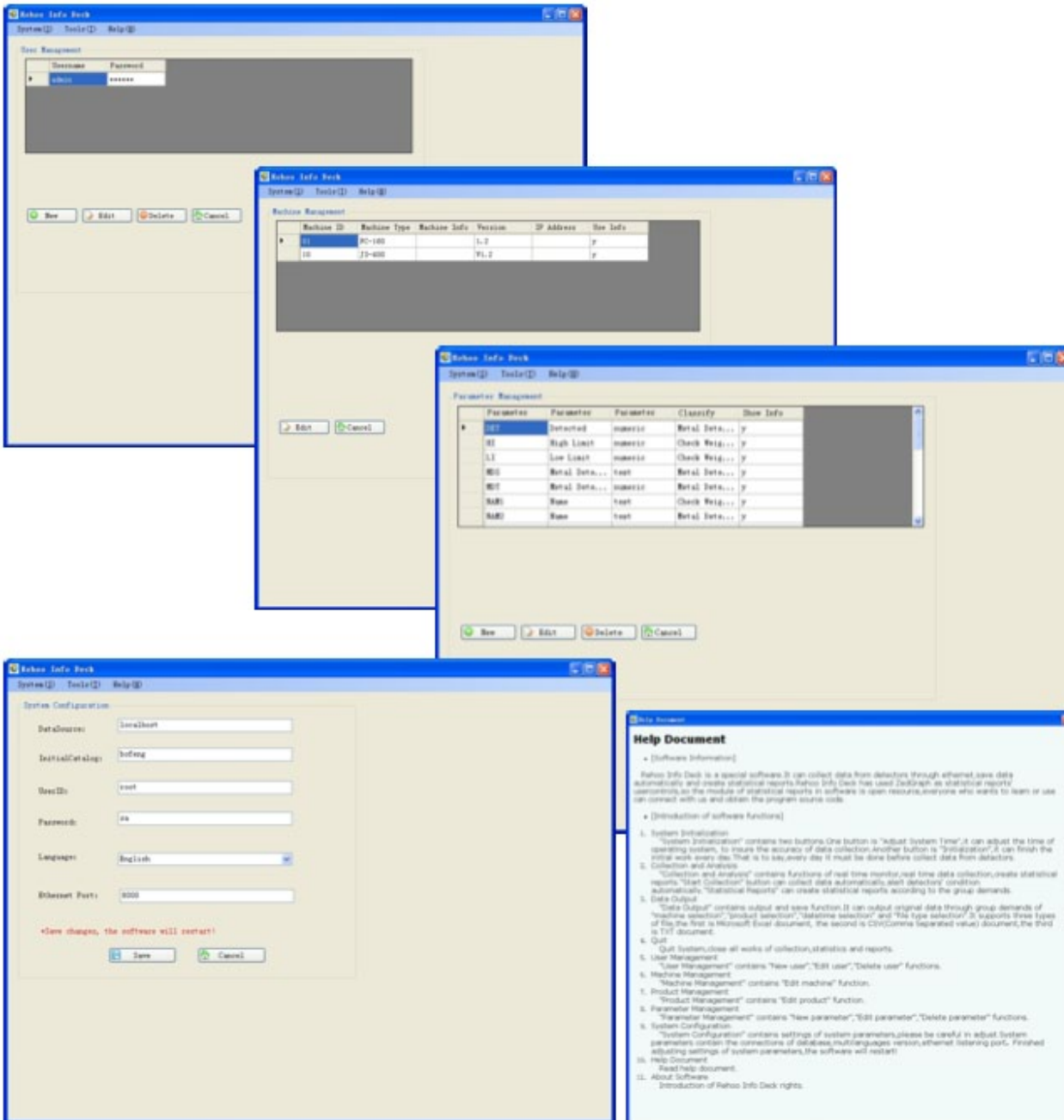
## Operation Interface



## Statistics and Analysis



# Configurations



The screenshots illustrate the configuration capabilities of the Rehov Info Deck software. The windows shown are:

- User Management:** A table with columns for Username and Password. A single user entry is visible.
- Machine Management:** A table with columns for Machine ID, Machine Type, Machine Info, Version, IP Address, and Site Info. Two machine entries are listed.
- Parameter Management:** A table with columns for Parameter, Parameter, Parameter, Classify, and Show Info. Multiple parameters are listed with their respective values and classification.
- System Configuration:** A form with fields for Database, Initial Catalog, Base ID, Password, Language (set to English), and Ethernet Port. A note at the bottom states: "Save changes, the software will restart!".
- Help Document:** A window displaying the software's help text, including an introduction and a list of functions.